

# In Our School

University Preparatory Academy - Mark Murray Campus - January 2017

Welcome back from Winter Break and Happy 2017. I hope you had a wonderful time with your family and friends during the holidays.

The beginning of a new calendar year also marks the coming of our second semester. As we near the mid-point of this school year, we are gearing up for our second round of NWEA MAP Testing and our District Interim Assessments in both Math and ELA. MAP testing will take place from January 23<sup>rd</sup> through January 30<sup>th</sup>. Our District Interim Assessments will take place the week of January 17<sup>th</sup>. Please do your best to ensure on-time and regular attendance during these very important testing times. On February 6<sup>th</sup> you will receive your child's first report card for the year. Reports sent home in November were progress reports. Your child's January report card is a reflection of grades and participation from the beginning of the school year through January 27<sup>th</sup>, the end of the first semester. These reported second quarter grades are averaged with the first quarter grades and represent your child's official grades for the first semester.

Along with the New Year often comes resolutions and we have a great one to suggest to you! We have been experiencing a high number of tardies in the morning and would love to see our families making the resolution to be at school by 8:20. We have implemented a gentle start to school and teachers open their door each morning at 8:20. Our school bell rings at 8:30, so students arriving after this time are marked as tardy. Making time in the evening to set out clothes, pack backpacks and make sure phone alarms are set, are all helpful strategies to take the stress out of morning routines. If making time for a satisfying breakfast is difficult, please know we offer a breakfast program between 7:50 and 8:10. We also offer FREE supervision for all students beginning at 7:50 EACH MORNING. Thank you for making regular school attendance a priority! We appreciate your commitment to working with us as together we strive to raise student achievement. Students can't learn if they are not in attendance or if they are late every day.

As always, please know we are here to serve you! If you have questions please do not hesitate to call or stop by.

Happy New Year!

*Kimberly Llorens*

Kimberly Llorens

## UPCOMING EVENTS

### January 2017

- 10 - Banking Day
- 11 - All School Morning Crew 8:30 in the gym
- 11 - Early Release Day School dismisses at 1:30
- 16 - No School - Dr. King Holiday
- 17 - District Interim Assessments in Math and ELA
- 19 - Mark Murray Parent Meeting at 6:00 school gym
- 23 - NWEA MAP Testing begins
- 24 - Banking Day
- 25 - Early Release Day School dismisses at 1:30
- 27 - Dress for a Dollar Day
- 27 - End of the first semester
- 30 - No School for Students
- 31 - Muffins with Mom @ 7:45am second floor village center
- February 1-3** Fifth Grade Camp
- February 6** - Narrative Report Cards go home

## Open Enrollment is Ending.....

If you have friends or family members who are interested in enrolling in our schools for the 2017-2018 school year, please note that open enrollment is ending soon. All applications must be submitted electronically by this date. Please visit [www.uprepschools.com](http://www.uprepschools.com) for the online application.



### ~ WINTER ATTIRE ~

Parents are reminded to dress children for the upcoming winter months. Boots, hats, coats and mittens/gloves need to be worn for our students' protection. Please remember that teachers bring students out to recess if the temperature is above freezing. Please make sure your child's name is printed on the inside of their winter clothing. Let's dress warmly! Students, especially those in younger grades, are encouraged to have a change of clothing in their cubby area at all times. While we try to keep extra clothing on hand for emergencies but this is not always available.

**MARK YOUR CALENDARS.....NO SCHOOL for Students  
January 16<sup>th</sup> (DR. KING DAY) and January 30<sup>th</sup> (Data Day for  
Teachers)**

## Personal Information Update

There have been numerous occasions where we have had to get in touch with parents over the last few weeks and have discovered that phone numbers and addresses have been changed. If you have moved or changed your phone number, please fill-out the attached page and return to Ms. King or Ms. Garcia at the front desk.



Student Name \_\_\_\_\_

Parents' Name \_\_\_\_\_

Home Phone Number \_\_\_\_\_

Cell Phone Number \_\_\_\_\_

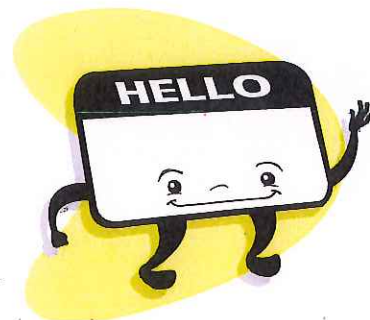
Emergency Contact Name \_\_\_\_\_

Emergency Contact Number \_\_\_\_\_

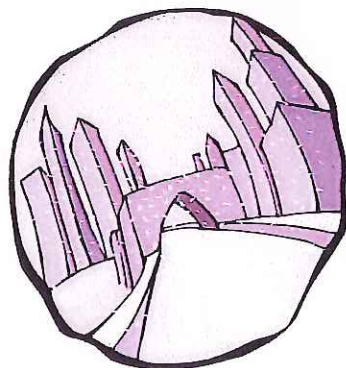
Email \_\_\_\_\_

## VISITOR'S BADGE

Please help us out. When you enter the building, please sign in at the front desk with Ms. Garcia or Ms. King. They will give you a visitor's badge if you have a *pre-arranged appointment* with your child's teacher and you have completed the necessary paperwork for entrance into classroom. Please wear this at all times in the building. In this way, all staff will know that you have checked in at the office. We will also be able to better monitor who is coming into the building. This is for the safety of our students and staff. We require visitors to have pre-arranged scheduled times with teachers because once the clocks read 8:20am our teachers are busy at work and your child and their classmates are busy learning.



## Inclement Weather Policy



We are at that time of the year when the weather may become a factor in the daily operation of our schools. The decision to close school is made only when the road conditions in all or a large segment of the city makes the transportation of children to and from school or the operation of school buildings unsafe. Input on road conditions is received from our District Facilities Manager. Every attempt to complete the decision by 5:30 A.M. will be made. The announcement of school closings will be broadcast on the local television stations. Announcements will be made as soon as possible but initially by or between 6:00 and 6:30 a.m. with updates as necessary.

## Handicap Parking Spaces

We have several families who require the use of the handicap parking spaces in our lot. If you do not have a state approved handicap sticker or placard, please do not use these spaces.



**CROSSING GUARD WELCOME.....**  
A very special welcome to Mr. Braxton, our new crossing guard

